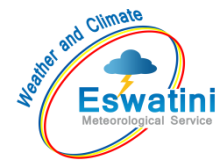


AGROMETEOROLOGICAL BULLETIN

Doc No: TEA 3/3/7/2 F-004
Revision No: 1
Effective Date: 01.07.2017
Page No: 1 of 5
Approved by:



REPORTING PERIOD:
21 – 28 FEBRUARY 2025



ISSUE No.: 15

SEASON: 2024/25

RELEASED: 04/03/2025

CONTENTS

CONTENTS	1
HIGHLIGHTS	1
RAINFALL AND TEMPERATURES	2
RAINFALL	2
TEMPERATURES	3
MAIZE AND OTHER CROPS.....	3
MAIZE CROP STAGE AND CONDITION..	3
OTHER CROPS	3
CURRENT FARMING ACTIVITY	3
LIVESTOCK AND PASTURES	4
WATER SITUATION	4
MEDIUM-TERM OUTLOOK	4
RAINFALL	4
TEMPERATURE	4
SOIL MOISTURE	4
WIND SPEED.....	4

HIGHLIGHTS

- **Decrease in rainfall observed...**
- **Good vegetation condition....**
- **Legume planting activities..**
- **Slight increase in rainfall anticipated**
- **Warm to hot temperatures forecasted...**
- **Not much improvement in soil moisture expected.....**

AGROMETEOROLOGICAL BULLETIN

Doc No: TEA 3/3/7/2 F-004

Revision No: 1

Effective Date: 01.07.2017

Page No: 2 of 5

Approved by:

RAINFALL AND TEMPERATURES

RAINFALL

Below long term average rainfall was observed in the 3rd dekad of February 2025 (**Figure 1** and **Map 1**).

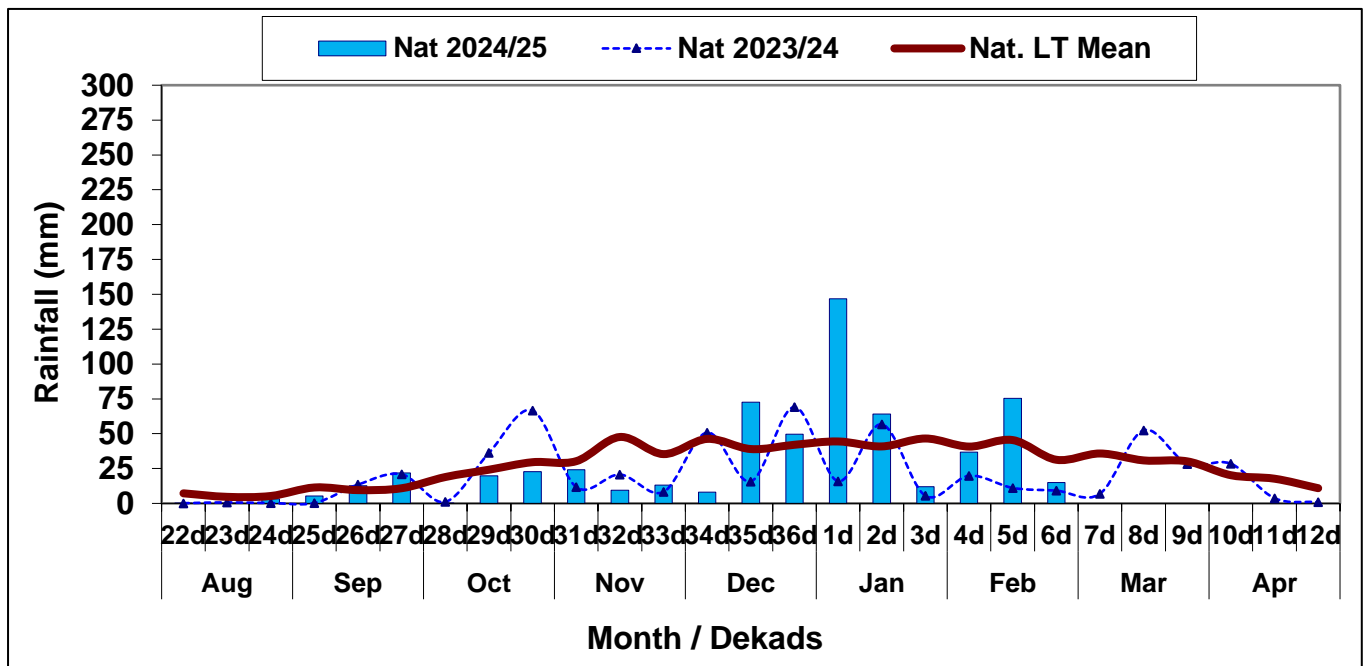
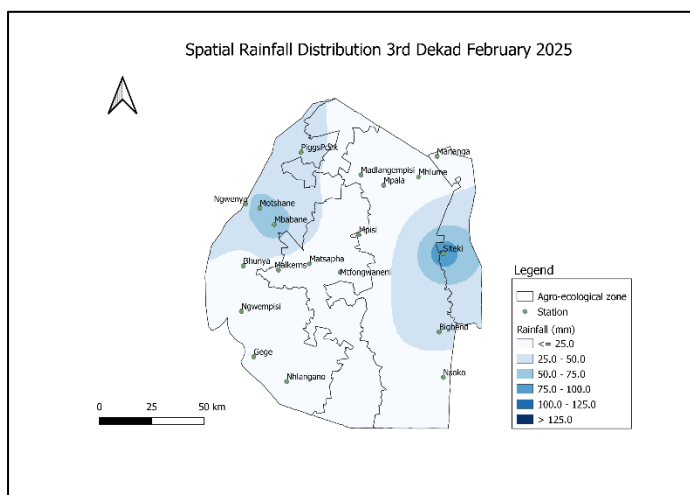
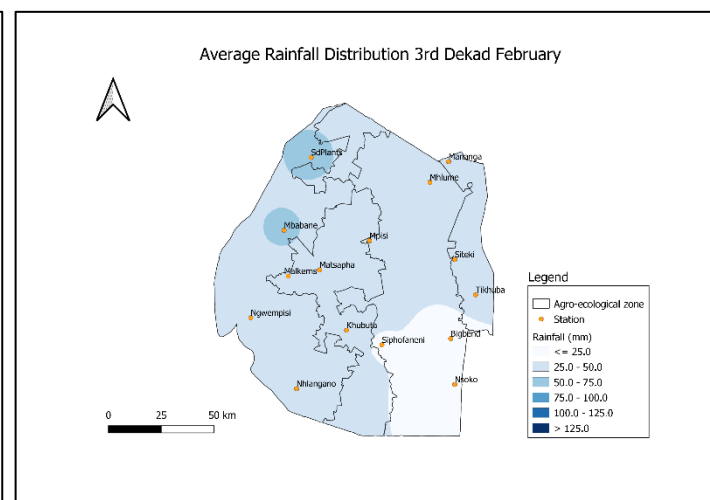


Figure 1: Rainfall distribution 3rd dekad February 2025



Map 1: Spatial rainfall distribution 3rd dekad February 2025



Map 2: Average Rainfall distribution 3rd dekad February

Compiled and Issued by: Agrometeorological Unit,

Swaziland Meteorological Service, Ministry of Tourism and Environmental Affairs.

Box 2652, Mbabane, Swaziland. ☎ (+268) 2404 8859 / 2404 6274. 📠 Fax: 2404 1530

E-mail: dudu@swazimet.gov.sz

AGROMETEOROLOGICAL BULLETIN

Doc No: TEA 3/3/7/2 F-004
Revision No: 1
Effective Date: 01.07.2017
Page No: 3 of 5
Approved by:

Rainfall observed was below average in the country, save for the Lubombo Plateau region which observed slightly above average rainfall during the reporting period (**Table 1**).

Table 1: Rainfall (mm) 3rd dekad February 2025

	HV	MV	LV	LP	
2023/24	13	7	8	8	8
Average	42	35	21	29	29
2024/25	23	4	11	43	43
Anomaly	-20	-31	-10	15	15

TEMPERATURES

Cool to warm temperatures were generally observed during the reporting period. Most of the regions observed below average temperatures (**Figure 2**).

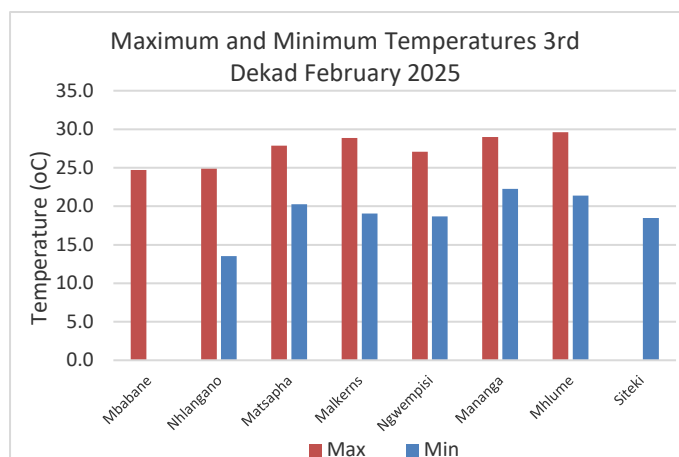


Figure 2: Maximum and Minimum temperatures 3rd dekad of February 2025

MAIZE AND OTHER CROPS

MAIZE CROP STAGE AND CONDITION

Maize is mostly at flowering stage, while some has started maturing. The condition is mostly good.

OTHER CROPS

Planting of Sweet potato is encouraged during this period in the upper and lower Lubombo Plateau, as well as planting of Beans in the upper Lubombo Plateau and Lowveld.

CURRENT FARMING ACTIVITY

Farmers are encouraged to weed their crops, apply top dressing and preventive pesticides. They should also scouting for pests, such as Fall Army Worm (FAW) and watch out for root rot in Groundnuts, especially in wet fields.

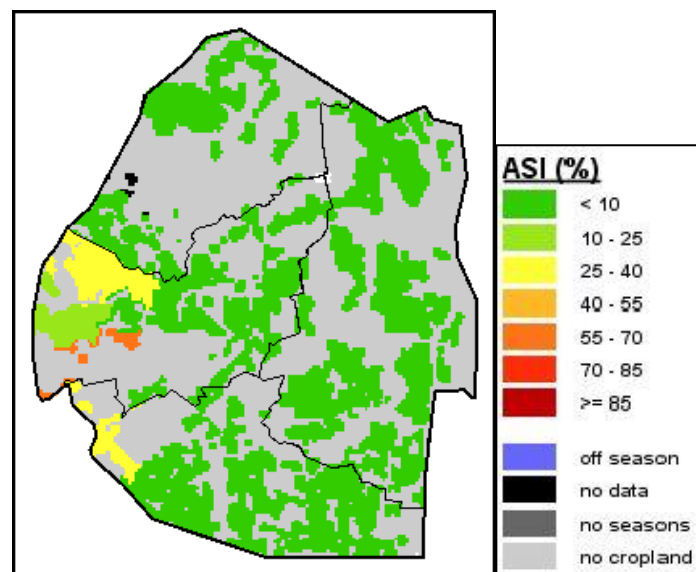


Image 1: Agriculture Stress Index 3rd dekad February 2025
Source: FAO-GIEWS

AGROMETEOROLOGICAL BULLETIN

Doc No: TEA 3/3/7/2 F-004

Revision No: 1

Effective Date: 01.07.2017

Page No: 4 of 5

Approved by:

LIVESTOCK AND PASTURES

Livestock is in good condition as rangelands are reported to be in good condition.

WATER SITUATION

Most dam levels are still at full capacities.

MEDIUM-TERM OUTLOOK

RAINFALL

Not much rainfall is anticipated in the outlook period.

TEMPERATURE

Cool, warm to hot temperatures are anticipated in the outlook period.

SOIL MOISTURE

Not much improvement in soil moisture is expected in the outlook period.


WIND SPEED

Wind will generally be light during the outlook period.

NB: Outlook period is ten days from date of issue

Compiled and Issued by: Agrometeorological Unit,

Swaziland Meteorological Service, Ministry of Tourism and Environmental Affairs.

Box 2652, Mbabane, Swaziland.  (+268) 2404 8859 / 2404 6274. Fax: 2404 1530

E-mail: dudu@swazimet.gov.sz

AGROMETEOROLOGICAL BULLETIN

Doc No: TEA 3/3/7/2 F-004

Revision No: 1

Effective Date: 01.07.2017

Page No: 5 of 5

Approved by:

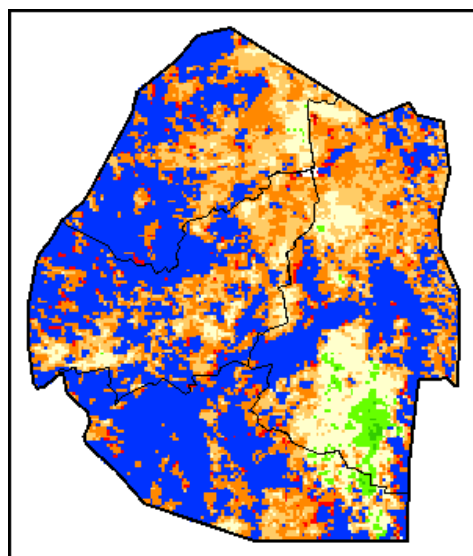
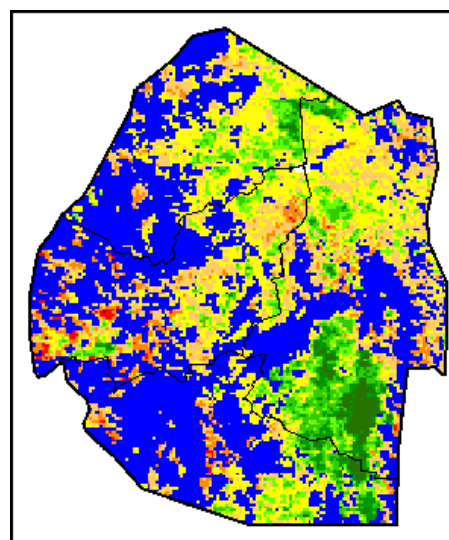
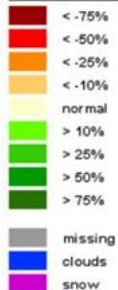


Image 2: Normalized Difference Vegetation Index (NDVI) Anomaly (3rd Dekad February 2025)
Source: FAO-GIEWS

Legend

Difference to LTA



Legend

VHI

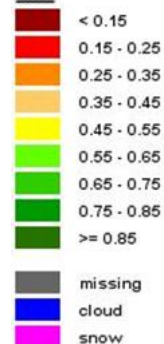


Image 3: Vegetation Health Index (VHI) (3rd Dekad February 2025)
Source: FAO-GIEWS

Compiled and Issued by: Agrometeorological Unit,

Swaziland Meteorological Service, Ministry of Tourism and Environmental Affairs.

Box 2652, Mbabane, Swaziland. ☎ (+268) 2404 8859 / 2404 6274. Fax: 2404 1530

E-mail: dudu@swazimet.gov.sz